

Success Stories: Utility Scale Solar Parks

“Results
that Matter”



2010 - 2011 Ravenna Project
One of the largest operating PV plants
in the world

Ravenna Project | Alfonsine and S. Alberto



A cluster of 2 plants connected to the same high voltage stations: one in S. Alberto and one in Alfonsine, near Ravenna, North-East Italy.

Total installed power: 124 MW

EPC: Tozzi Sud Spa – The company designs, procures and installs renewable power generation plants in Italy and worldwide

Tozzi Sud

Location | Alfonsine and S. Alberto

The plants are located in Emilia Romagna, in the Province of Ravenna. The area is completely flat, between the Adriatic Sea and the hills of Faenza. A few kilometers separate it from the coast of Ravenna and the Romagna Apennine foothills. It includes the towns of Alfonsine Bagnara di Romagna, Bagnacavallo, Conselice, Cotignola, Fusignano, Lugo, Massa Lombarda, Russi and Sant'Agata sul Santerno.

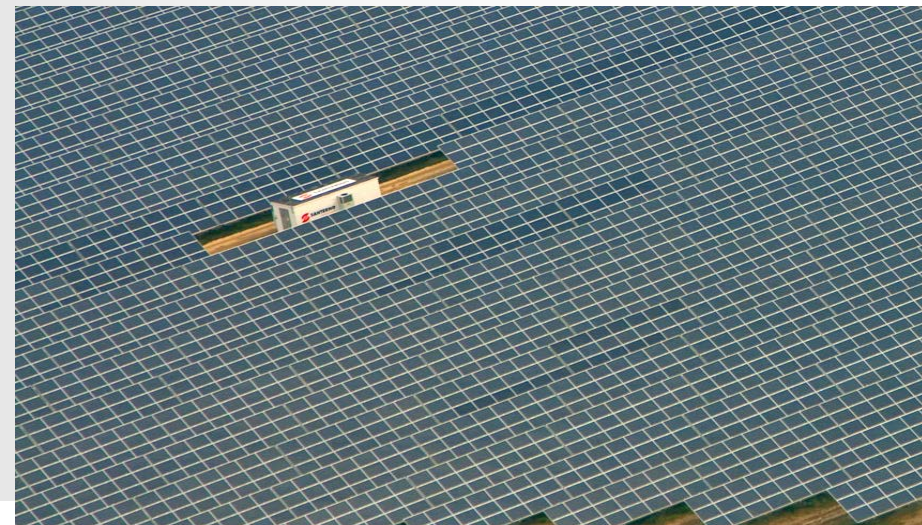


The area is near the river Reno.
The area is mainly agricultural, far from any town (the closest is about 1.5 km)
The distance between S. Alberto and Alfonsine plants is approximately 10 km.

Alfonsine Project



- **EPC:** Tozzi Sud S.p.A
- **Plant Owner:** Terna
- **PV Modules:** Trina
- **Alfonsine Plant 1:**
 - 35 MWp installed power
 - 70 hectares
 - Produces 40 millions kWh /year, that is the energy needed for 10.000 families
 - Grid Connection: December 2010
- **Alfonsine Plant 2:**
 - 25 MWp installed power
 - 50 hectares
 - Grid Connection: August 2011

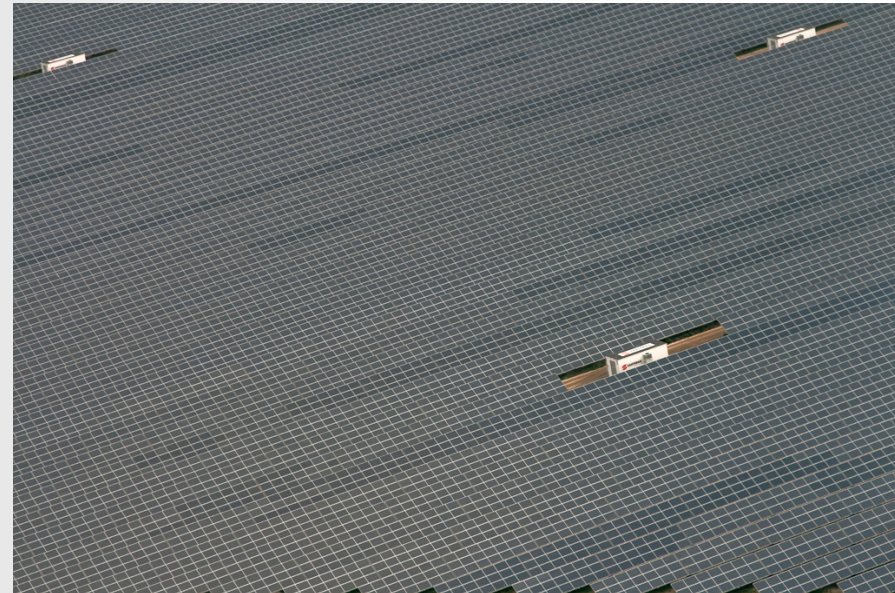


S. Alberto Project



- **EPC:** Tozzi Sud S.p.A
- **PV Modules:** Jinko
- **S. Alberto Plant 1:**
 - 36 MWp installed power
 - 70 hectares
 - Grid Connection: December 2010
- **S. Alberto Plant 2:**
 - 29 MWp installed power
 - 60 hectares
 - Grid Connection: August 2011

Jinko



Ravenna - Full Project



- **124 MWp**
- **240 hectares** (equalling 2,400,000 square meters)
- **148 GWh/year energy production**
- **97% guaranteed uptime with 20-year availability contract**



- Santerno supply:
 - **N.42 Sunway Stations 1350** for S. Alberto plant
 - **N.40 Sunway Stations 1350** for Alfonsine plant
 - N.752 Smart String Boxes 1000V for S. Alberto plant
 - N.560 Smart String Boxes 1000V for Alfonsine plant
- Alfonsine 1 and S.Alberto 1 plants were built in parallel:
N.46 Sunway Stations were supplied in **4 months**
- Alfonsine 2 and S.Alberto 2 plants were built in parallel:
N.36 Sunway Stations were supplied in **6 weeks**

