

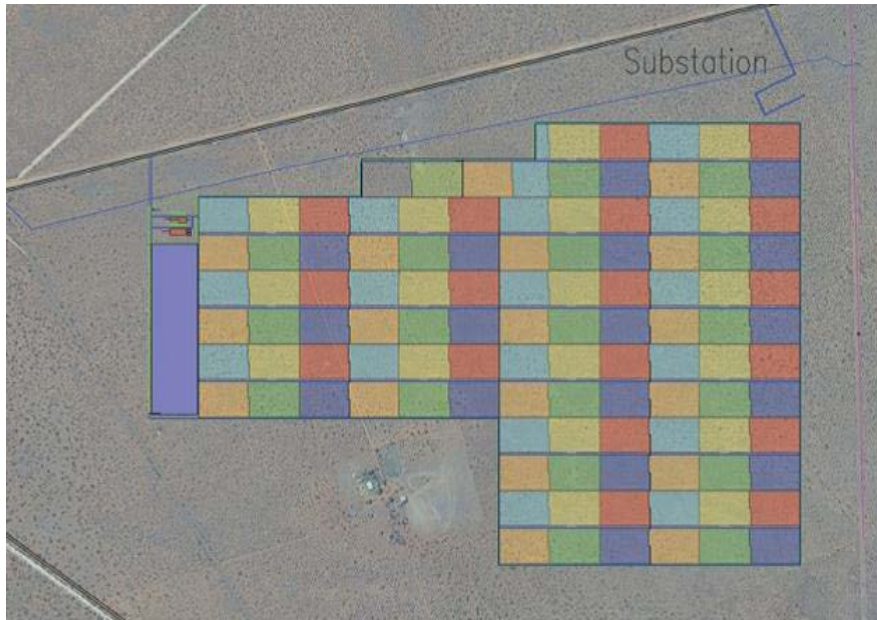
REFERENCE LIST

Ground Plants

Kathu Project | South Africa



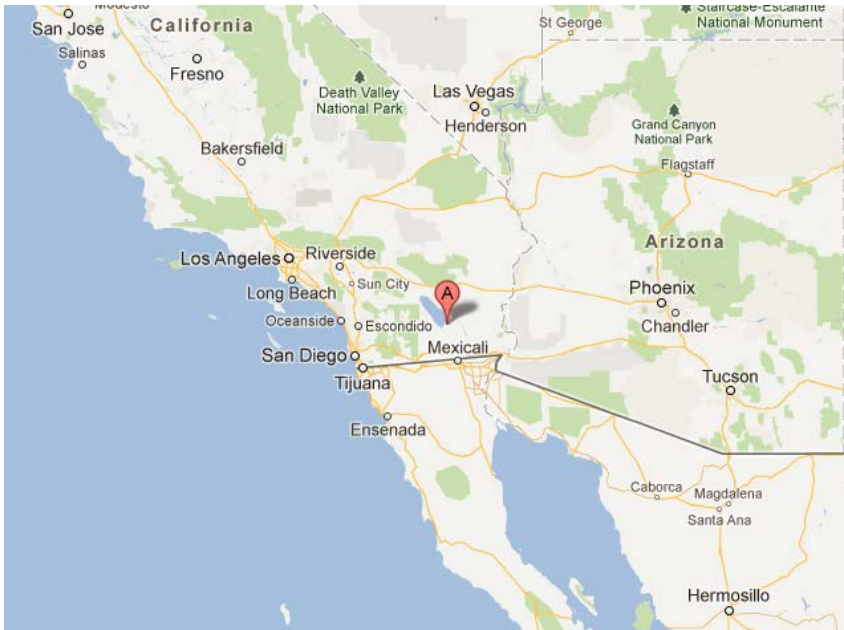
Power : **81 MW**
Commisioned : **Under construction (2012-2013)**
Costumer: Building Energy
Inverters: n. 110 Sunway™ TG 750 1000V
Latitude: 27° 48' 00" S
Longitude: 23° 00' 00" E
Altitude: 1197 m above sea level



Imperial Valley | California



Power : **155 MW**
Commissioned : **Under construction (2013)**
Inverters: n. 103 Skid Stations each with 2 Inverters
Total: 206 Sunway™ TG 750 1000V



Amonix Lab | Denver, CO - USA



Power: **85 kWp**

Connection date: Jan 2012

EPC: Amonix / SolarTAC

Customer: Amonix

Modules: Amonix CPV two-axes tracker

Inverters: Santerno TG 100 NA

Notes:

- 210 high efficiency multi-junction cells
- ca. 30% module high efficiency
- 7 strings each tracker
- one single inverter (one MPPT) each tracker
- Active/reactive voltage / PF control
- UL 1741 compliant
- Scada monitoring system included



Linden, New Jersey - USA



Power: 200 kWp
Connection date: 2011
Customer: ARE Sun Solar
Modules: Sunpower
Inverters: Santerno TG 100 NA

Notes:

American Renewable Energy (ARE) designs and installs cutting edge, highly efficient photovoltaic (PV) systems with components from leading global manufacturers for residential, commercial, and nonprofit customers.



Panchkula Project | Chandigarh - India



Power : **1 MW**
Conection date: Feb 2012
Costumer: IVRCL Limited
Inverters: n. 2 Sunway™ TG 610 800V TE

Notes:

IVRCL operates in the following core infrastructure sectors:

- Water & Environment
- Transportation
- Buildings
- Power



Kutch Project | Gujarat - India



Power : **20 MW**

Commisioned : **Dec 2011**

Costumer: Solar Semiconductor

Inverters: n. 28 Sunway™ TG 750 1000V
n. 300 String Boxes with 4850
monitored strings

Notes:

The project location is situated about 7 km from (Ahmedabad-Kandla Port) National highway **Mouje Village Shivilakha** in Kutch district ,State of Gujarat.

Latitude: **23°19'28' N**
Longitude: **70°24'1'E**
Altitude: **24 m** above sea level



Piombino, Livorno - Italy



Power: **994,84 kWp**

Connection date: 2011

EPC: Renience Srl

Customer: Enerlive

Modules: LDK 220

Inverter: Sunway Station 1020



Shigatze | Tibet - China



Power: **10 MW**

Connection date: **2011**

EPC: Linuo Group

Inverters: 12 Sunway™ TG 750 900V TE

Notes:

- The plant is located in the regions of Shigatze, Tibet
- Altitude: **3.895m asl**
- Atmospheric conditions of this type (desert area, altitude, strong sunlight) may subject the facility to non-optimal working conditions and require that the inverters are rugged and can withstand and manage these situations.



Casole d'Elsa, Siena - Italy



Power: 993,6 kWp
Connection date: 2011
EPC: Renience Srl
Customer: Solatos
Modules: LDK 230
Inverter: Sunway Station 1020



Rapolano Terme, Siena - Italy



Power:	998,2 kWp
Connection date:	2011
EPC:	Renience Srl
Customer:	Primasolar
Modules:	LDK 230
Inverter:	Sunway Station 1020



Casole d'Elsa, Siena - Italy



Power: 643,9 kWp
Connection date: 2011
EPC: Renience Srl
Customer: Primasolar
Modules: LDK 235
Inverter: Sunway Station 620



Alfonsine and S. Alberto | Ravenna - Italy



Power: total cluster of 124 MW

Connection date: 2010 - 2011

EPC: Tozzi Sud Spa

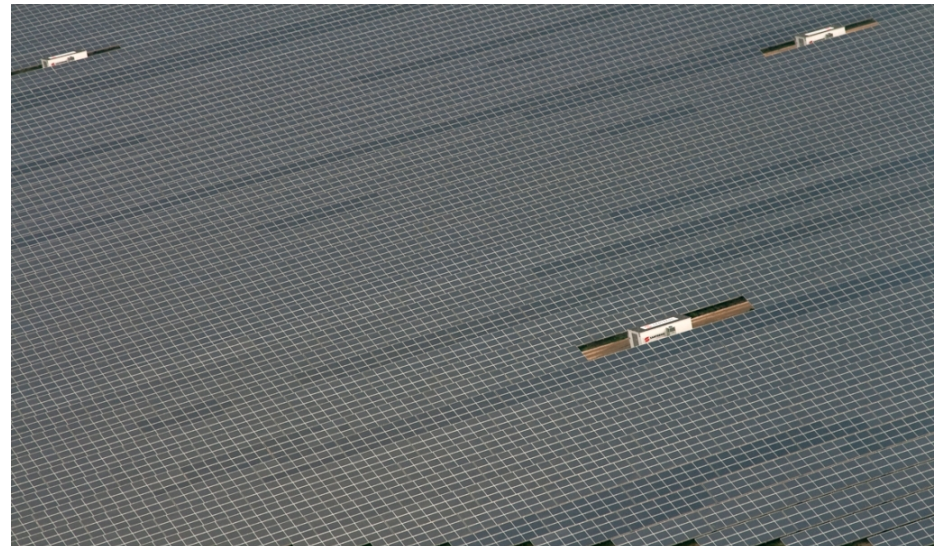
Customer: Terna

Inverters:

- **Project 1 San Alberto:** 42 Sunway™ Station 1.350 and 752 Smart String Box 1000V – Modules: Jinko
- **Project 2 Alfonsine:** 40 Sunway™ Station 1.350 and 560 Smart String Box 1000V – Modules: Trina

Key Notes

- 97% availability and maintenance contract for 20 years warranty
- PV plant completed in five months thanks to SANTERNO plug-and-play solutions
- Bearing structure of the modules: galvanised steel and aluminium with no use of concrete (Supplied and installed by Schletter GmbH)
- Oil MV transformer
- Area size: total of 240 ha (2,4 Km²)
- Expected production: total of 148 GWh/year



Isola di Capo Rizzuto, Crotone - Italy



Power: **1.287 MWp**

Connection date: 2010

EPC: Renience Srl

Customer: Soc. Agricola Orrizzontesole

Modules: Suntech 185

Inverter: 1 Sunway Station 820 , 1 Sunway Station 520



Bagnolo di Po, Rovigo - Italy



Power: 100 kWp
Connection date: 2010
EPC: Elektra Group
Customer: Comune Bagnolo di Po
Modules: VPM Solar
Inverter: 1 Sunway™ TG 110 600V



Belgorod - Russia



Power: **100 kWp**

Connection date: 2010

EPC: LLC "VIECO"

Costumer: ALT Energo Invest kft.

Inverters: 2 Sunway™ TG 61 600V

Key Notes:

- The largest running PV plant in Russia
- SANTERNO was chosen as supplier due to the shortest delivery time for high-end inverters
- The project is the first PV station of its kind in in Russia, a good reference for any additional project
- New projects are already in the pipeline, capitalizing on SANTERNO's favourable market position in Russia
- Two Smart String Boxes with 24 inputs and two LED Displays



Corinaldo | Ancona - Italy



Power: **5,5 MW**

Connection date: **2010**

EPC: General Building – IFE Eriksen AG

Modules: 23.000 Aleo Avim

Inverters: 5 Sunway™ TG 750 900V TE
3 Sunway™ TG 730 800V TE



Golmud | Qinghai - China



Power: **10 MW**

Connection date: **2010**

EPC: Longyuan Group

Inverters: 18 Sunway™ TG 730 800V TE
2 Sunway™ TG 750 900V TE

Notes:

- The facility was built by Longyuan, which is part of China Guodian Group (one of 5 major power companies in China).
- Longyan was established in 1993 and becoming a leader internationally.
- Longyan below 70% of businesses related to renewable energy of the parent company.
- The planned installed capacity by 2020 is 2GW



Soletto | Lecce - Italy



Power: **6 MW**

Connection date: 2010

Investor: HFV Novenergia

EPC: Ansaldo Energia

Inverters: 6 steel Sunway™ Station
1020



South Korea

Power: **total of 3.1 MWp** (3 projects)

Connection date: **2010**

Customer & EPC: SR TECH CO., LTD

Inverters:

Project 1: Two PV Plants, 1 MWp each

3 Sunway™ TG 485 KR-800V

4 Sunway™ TG 385 KR-800V

Project 2: Two PV Plants, 400 kWp each

2 Sunway™ TG 385 KR-800V

1 Sunway™ TG 385 KR-800V

Project 3: Three PV Plants, 100 kWp each

1 Sunway™ TG 145 KR-800V

1 Sunway™ TG 145 KR-800V

Key Notes:

- Total installed capacity in 2010: 3.4 MW



Power: **5,6 MW**

Connection date: 2010

Investor: HFV Novenergia

EPC: Ansaldo Energia

Inverters: 5 steel Sunway™ Station 1020

Key Notes:

- Valued investors and EPC
- Realized in steel container, instead of cabinet (useful for transportation)
- Ansaldo belongs to the important Finmeccanica company and can be seen as key client



Corinaldo | Ancona - Italy



Power: **2,3 MW**

Connection date: 2009

EPC: General Building

Modules: 10.000 Aleo

Inverters: 12 Sunway™ TG230 600V TE

Key Notes

- The solar power plant produce clean energy for about 2.5 to 3 million kWh / year, saving about 1,500 tons of CO₂ to the atmosphere each year.
- Overall, the entire plant life cycle, the solar park will be able to save the atmosphere at least 30 000 tonnes of CO₂.



Cascina | Pisa - Italy



Power: **9,9 kWp**

Connection date: **2009**

EPC: Sunglobal

Modules: 45 Aleo S18 220 Wp

Inverters: 3 Sunway™ M Plus 3600



Thermal Power Station | Sardegna - Italy



Power: **1,35 MW**

Connection date: 2009

Customer: E-on

Modules: Sunpower



Zello | Bologna - Italy



Power: **2 MW**
Connection date: 2009
Customer: CEIF
Inverters: 2 Sunway™ Station



Valfabbrica Plant | Valfabbrica, Perugia - Italy



Power: **999 kWp**
Connection date: **2008**
EPC: Consorzio ABN
Customer: Ecosuntek SpA
Inverters: 3 Sunway™ TG 385 800V TE



Altomonte | Calabria - Italy

Power: **3,3 MW**

Connection date: 2008

Customer: Edison



Los Cabezos | Andalusia - Spain



Power: **1,89 MW**
Connection date: **2008**
Customer: Ecostream



El Viso | Bogaris - Andalusia - Spain



Power: **1,89 MW**
Connection date: 2008
Customer: Ecostream



Puebla de Almoradiel | Toledo, Spain



Power: **1,6 MW**
Connection date: 2008
Customer: Gestamp-Asetym



Villanueva de Alcardete | Toledo - Spain



Power: **2 MW**
Connection date: 2008
Customer: Gestamp-Asetym



Fuente Alamo | Murcia - Spain



Power: **26 MW**

Connection date: 2008

Customer: Gestamp - Asetym

Inverters: 160 Sunway™ TG 145 800V
32 Sunway™ TG 385 800V



Maials | Lleida - Spain



Power: **1 MW**

Connection date: **2008**

Customer: Comsa

Inverters: 11 Sunway™ TG 135 600V



Calasparra | Murcia - Spain



Power: **20 MW**

Connection date: **2008**

EPC: Gestamp Asety, (GA) Solar SA

Customer: GA Solar (new Fotowatio)

Modules: Trina Mainly, and also Jetion, Yingli and Suntech

Inverters: 80 Sunway™ TG 145 800V
40 Sunway™ TG 385 800V



Tolentino | Macerata - Italy



Power: **7,3 MW**

Connection date: **2008**

EPC: Sunpower

Customer: Api Nòva

Modules: Sunpower

Inverters: 4 Sunway™ TG 485 800V
2 Sunway™ TG 610 800V



Abanilla | Murcia - Spain



Power: **3,6 MW**
Connection date: 2007
Customer: Gestamp - Asetym
Inverters: 36 Sunway™ TG 145 800V



San Fernando | Reggio Calabria - Italy



Power: **1 MW**
Connection date: 2007
EPC: Sorgenia



Enna | Sicilia - Italy



Power: **1 MW**
Connection date: 2007
EPC: Sorgenia



Villacidro I-II | Sardegna - Italy



Power: **2 MW**
Connection date: 2007
EPC: Sorgenia



Benevento - Italy



Power: **1 MW**
Connection date: 2007
EPC: Sorgenia



Sahara | Tunisia



Power: **5 kWp**

Connection date: 2007

Inverters: 1 Sunway™ TG



Power: **1 MW**
Connection date: **2005**
EPC: Enel.SI



www.santerno.com