

# Reference List: Inverter Sunway™ TG 750 TE

JANUARY, 2014

STRICTLY CONFIDENTIAL



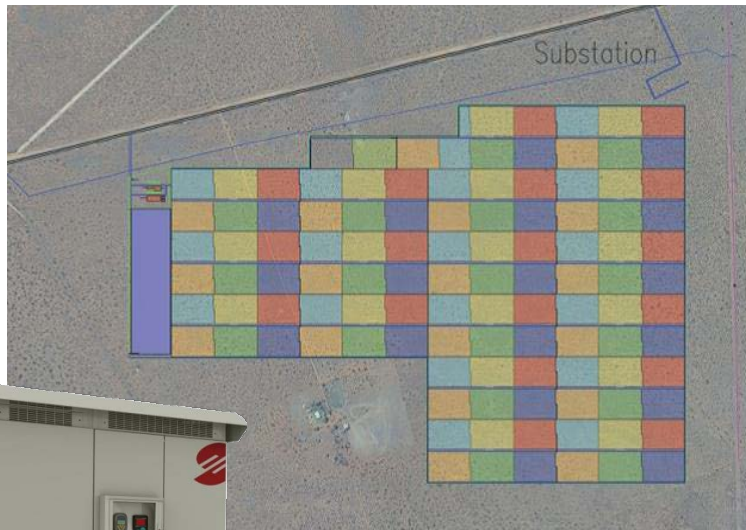
## Kathu Project | South Africa



**Power:** 81 MW  
**Commissioned :** 2013  
**Customer:** Building Energy  
**Inverters:** 110 Sunway™ TG 750 1000V

### Key notes:

- Latitude: 27° 48' 00" S
- Longitude: 23° 00' 00" E
- Altitude: 1197 m above sea level



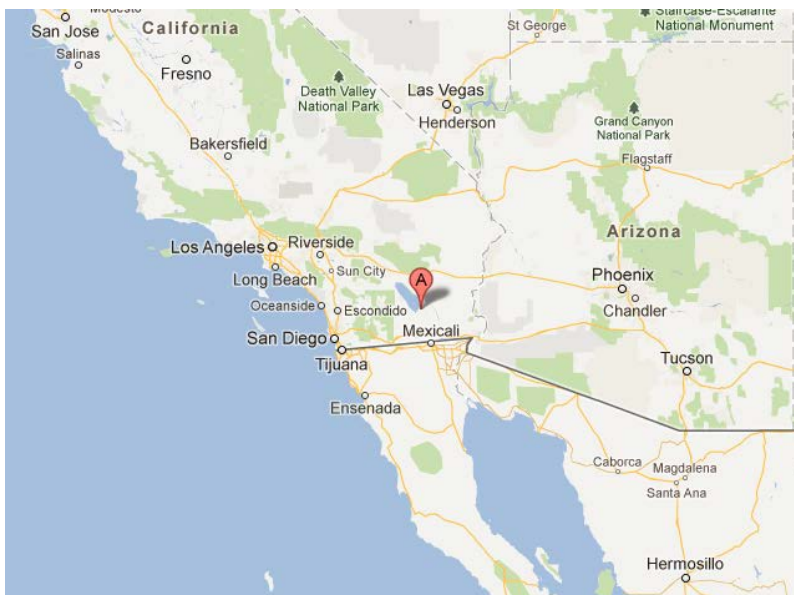
## Imperial Valley | California



**Power:** 155 MW  
**Commissioned :** 2013  
**Inverters:** 103 Skid Stations each with 2 Inverters  
Total: 206 Sunway™ TG 750 1000V



STRICTLY CONFIDENTIAL





## Kutch Project | Gujarat – India



**Power:** 20 MW

**Commissioned :** Dec. 2011

**Customer:** Solar Semiconductor

**Inverters:** 28 Sunway™ TG 750 100V  
300 String Boxes with 4850 monitored strings

### Key notes:

The project location is situated about 7 km from (Ahmedabad-Kandla Port) National highway Mouje Village Shivilakha in Kutch district, State of Gujarat.

**Latitude:** 23° 19' 28' N

**Longitude:** 70° 24' 1' E

**Altitude:** 24 m above sea level



## Shigatze | Tibet – China



**Power:** 10 MW  
**Commissioned :** 2011  
**Customer:** Linuo Group  
**Inverters:** 12 Sunway™ TG 750 900V TE

### Key notes:

- The plant is located in the regions of Shigatze, Tibet
- Altitude: 3.895m asl
- Atmospheric conditions of this type (desert area, altitude, strong sunlight) may subject the facility to non-optimal working conditions and require that the inverters are rugged and can withstand and manage these situations.



STRICTLY CONFIDENTIAL



## Dockyard | Ancona – Italy



**Power:** 3,2 MW  
**Commissioned :** 2011  
**EPC:** Energy Resources  
**Covered Area** 19.000 mq  
**Modules:** 15.248 Sunpower  
**Inverters:** 4 Sunway™ TG 730 800V

### Key notes:

- more than 850 tons of asbestos disposed
- 11 establishments covered
- 2,229 tons of CO2 saved



## Sihong | Jiangsu – China

**Power:** 1,9 MW  
**Commisioned :** 2011  
**Customer:** Everbright  
**EPC:** Tianwei PV Power  
**Inverters:** 3 Sunway™ TG 750 CN 900V



# Alfonsine and S. Alberto | Ravenna – Italy

**Power:** total cluster of 124 MW

**Commissioned :** 2010 - 2011

**EPC:** Tozzi Sud Spa

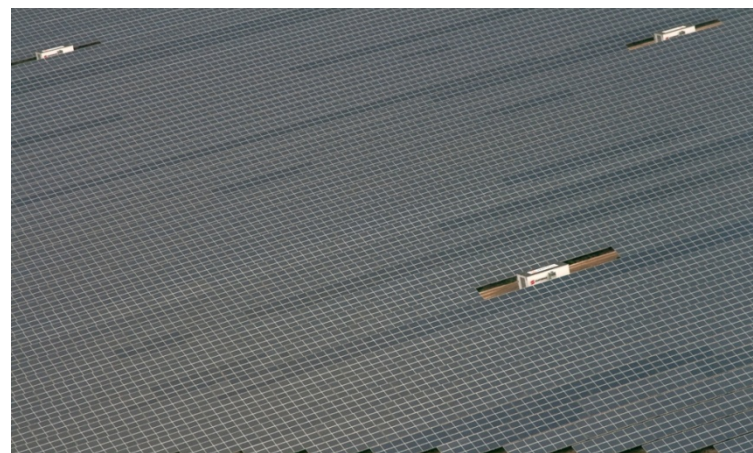
**Customer:** Terna

## Inverters:

- **Project 1 San Alberto:** n. 42 Sunway™ Station 1.350 and 752 Smart String Box 1000V – Modules: Jinko
- **Project 2 Alfonsine:** n. 40 Sunway™ Station 1.350 and 560 Smart String Box 1000V – Modules: Trina

## Key Notes:

- 97% availability and maintenance contract for 20 years warranty
- First step PV plant completed in five months and second step PV plant completed in 6 weeks thanks to SANTERNO plug-and-play solutions
- Bearing structure of the modules: galvanised steel and aluminium with no use of concrete (Supplied and installed by Schletter GmbH)
- Oil MV transformer
- Area size: total of 240 ha (2,4 Km<sup>2</sup>)
- Expected production: total of 148 GWh/year





## Corinaldo | Ancona – Italy



**Power:** 5,5 MW

**Commissioned :** 2010

**EPC:** General Building – IFE Eriksen AG

**Modules:** 23.000 Aleo Avim

**Inverters:** 5 Sunway™ TG 750 900V TE  
3 Sunway™ TG 730 800V TE



## Golmud | Qinghai – China



**Power:** 10 MW  
**Commissioned :** 2010  
**EPC:** Longyuan Group  
**Inverters:** 18 Sunway™ TG 730 800V TE  
2 Sunway™ TG 750 900V TE



## Thermal Power Station | Sardegna – Italy

**Power:** 1,35 MW  
**Commisioned :** 2009  
**Customer:** E-On  
**Modules:** Sunpower  
**Inverters:** 1 Sunway™ Station 1350





[santerno.com](http://santerno.com)

JANUARY, 2014

STRICTLY CONFIDENTIAL

